

Preserving Digital Public Television

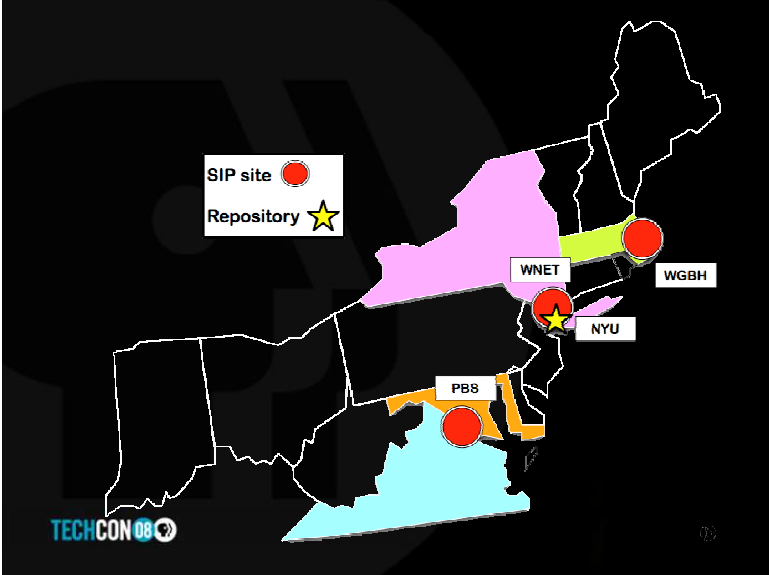
Strategies for creating a model repository

Kara Van Malssen - NYU



Goals

- Create a prototype repository for long term retention
- Aggregate content from partner stations + PBS for sample programs
- Use metadata that already exists (databases, PODS, file technical metadata)
- Transform data and bundle content, while preserving relationships between items
- Provide enhanced content back to submitters



Challenges

- Variety of material coming from different locations, different times
- Different file formats and databases
- Selection decisions

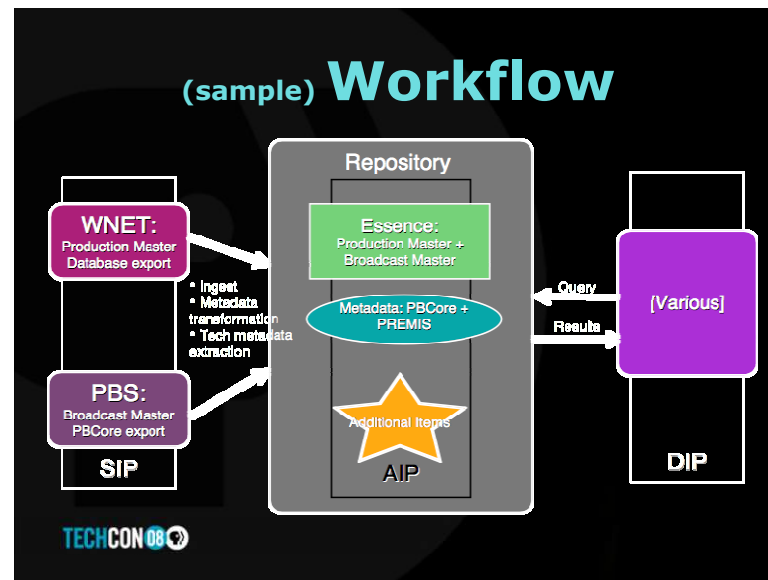
Success requires the input of all partners

Episode Packages					
Package #	Version	Package Type	Duration	Audio	SAP
P153584-005	NAAT 002204	SD-Base	00:56:46	STEREO	No
P153585-005	NAAT 002204	HD-Base	00:56:46	SRND51	No
P153584-004	NAAT 002204	SD-Base	00:56:46	STEREO	No
P153585-004	NAAT 002204	HD-Base	00:56:46	SRND51	No
P198120-003	NAAT 002204	SD-Embedded Promo	00:56:46	STEREO	No
P198117-001	NAAT 002204B1	SD-Base	00:56:46	STEREO	No
P198117-002	NAAT 002204B2	SD-Base	00:56:46	STEREO	No
P153584-001	NAAT 002204C1	SD-Base	00:56:46	STEREO	No
P153584-002	NAAT 002204C2	SD-Base	00:56:46	STEREO	No
P153585-001	NAAT 002204H1	HD-Base	00:56:46	STEREO	No
P153585-002	NAAT 002204H2	HD-Base	00:56:46	STEREO	No
P198118-001	NAAT 002204I1	HD-Base	00:56:46	STEREO	No
P198118-002	NAAT 002204I2	HD-Base	00:56:46	STEREO	No
P198119-001	NAAT 002204O1	SD-Stacked	00:56:46	STEREO	No
P198120-001	NAAT 002204W1	SD-Embedded Promo	00:56:46	STEREO	No
P153584-003	NAAT 002204	SD-Base	00:56:46	STEREO	No
P153585-003	NAAT 002204	HD-Base	00:56:46	SRND51	No
P198120-002	NAAT 002204	SD-Embedded Promo	00:56:46	STEREO	No

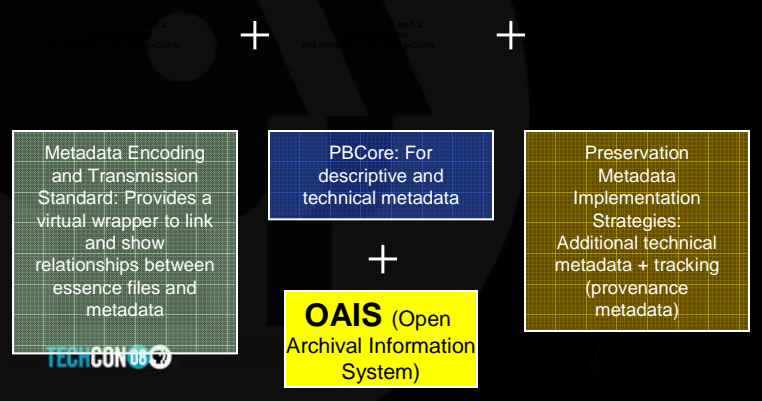
Which versions do we save? What do all these numbers mean?



(sample) Workflow



Keeping it all together: S&M (Standards and Metadata)



Looking Forward

The repository is:

Scalable

- Workflows for local and independent programming

Flexible

- Can handle a variety of file formats and metadata

Thank you!

kara.vanmalssen@nyu.edu

TECHCON 

